



# Artistic Analysis of Drone Footage

About this product:

The following are a practice for the Artistic Analysis of Drone Footage correlating to the Lesson 1 of “Drones, Photography and Data Collection”

Who should use this: science teacher, computer teacher, arts teacher

This is an activity for using the visual elements to critique a photo. It should be used after the video lessons entitled: “Camera is like an Eye” and “Visual Elements in Photography” from The Citadel Stem Center, ([www.citadel.edu/stem-center](http://www.citadel.edu/stem-center)) Lesson 1. It puts into practice the new vocabulary within those videos and allows a student to examine photos artistically.

What it contains:

2 pages of an outline with a word bank

Copies of 5 Drone photos labeled accordingly

Extension Idea: To allow students to work in a group to analyze the photos, print out COLORED sets of the photos to place in pods within your room.

KEY:

The key is provided on the last pages corresponding to the guide entitled “Artistic Analysis of Drone Footage.”

Name:

Date:

Period:

# Artistic Analysis of Drone Footage

Directions: Analyze 5 photos of the vacation spot for the artistic elements mentioned in the video “Visual Elements in Photography.”

## Word Bank

Perspective      Line      Rule of Thirds      Leading Line      Shape  
Form      Space      Foreground      Middle Ground      Background      Color  
Value and Light      Texture

### Photograph 1: Student Analysis 1

<b>Element</b>
<b>Why this element?</b>
_____
_____
_____
_____
_____

<b>Element</b>
<b>Why this element?</b>
_____
_____
_____
_____
_____

<b>Element</b>
<b>Why this element?</b>
_____
_____
_____
_____
_____

### Photograph 2: Student Analysis 2

<b>Element</b>
<b>Why this element?</b>
_____
_____
_____
_____
_____

<b>Element</b>
<b>Why this element?</b>
_____
_____
_____
_____
_____

<b>Element</b>
<b>Why this element?</b>
_____
_____
_____
_____
_____

Word Bank

Perspective

Line

Rule of Thirds

Leading Line

Shape

Form

Space

Foreground

Middle Ground

Background

Color

Value and Light

Texture

Photograph 3: Student Analysis 3

**Element**

**Why this element?**

---

---

---

---

**Element**

**Why this element?**

---

---

---

---

**Element**

**Why this element?**

---

---

---

---

Photograph 4: Student Analysis 4

**Element**

**Why this element?**

---

---

---

---

**Element**

**Why this element?**

---

---

---

---

**Element**

**Why this element?**

---

---

---

---

Photograph 5: Student Analysis 5

**Element**

**Why this element?**

---

---

---

---

**Element**

**Why this element?**

---

---

---

---

**Element**

**Why this element?**

---

---

---

---

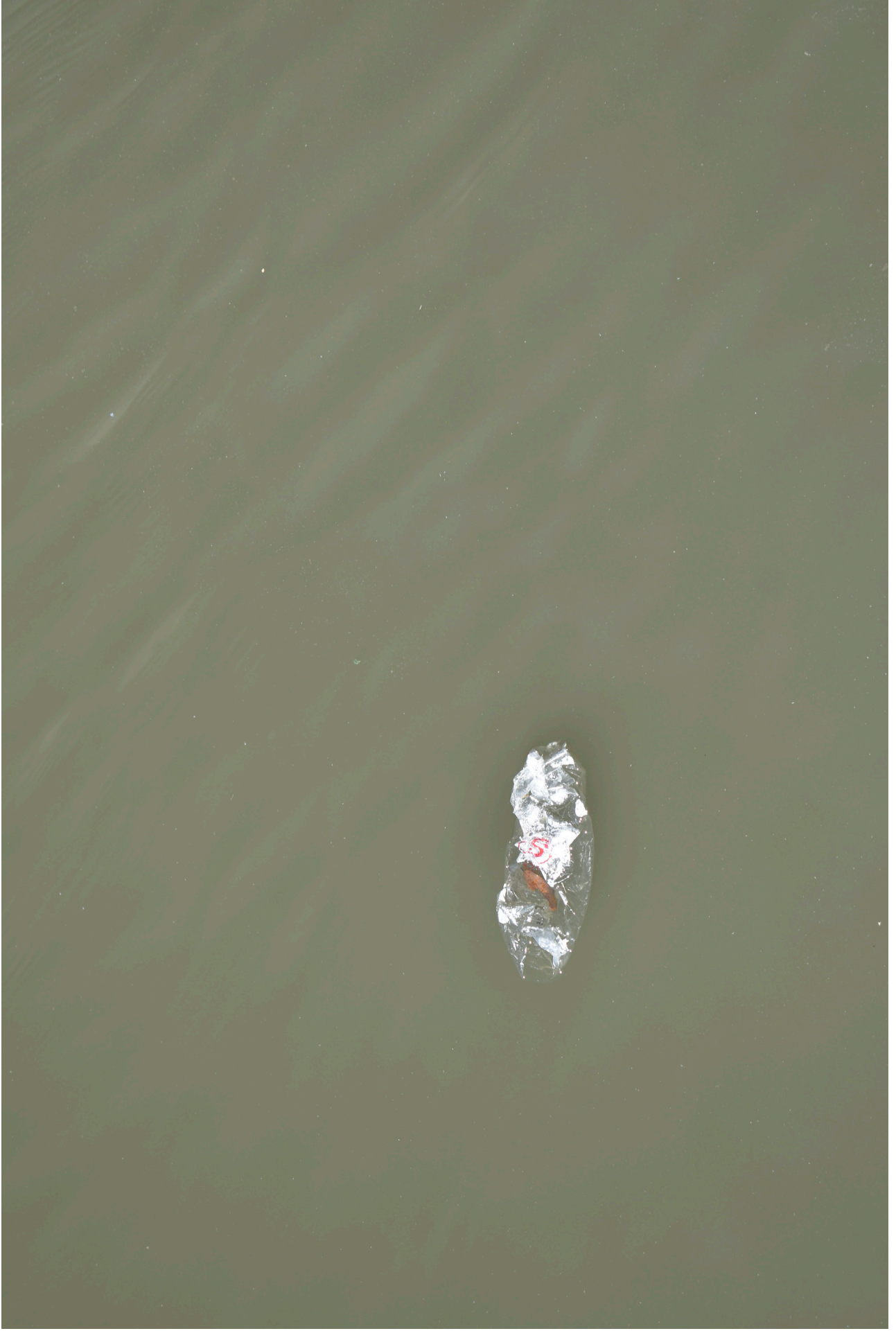


# Photograph 1: Student Analysis 1





## Photograph 2: Student Analysis 2





**Photograph 3: Student Analysis 3**





**Photograph 4: Student Analysis 4**





**Photograph 5: Student Analysis 5**





**Directions: Analyze 5 photos of the vacation spot for the artistic elements mentioned in the video “Visual Elements in Photography.**

Word Bank  
 Perspective Line Rule of Thirds Leading Line Shape  
 Form Space Foreground Middle Ground Background Color  
 Value and Light Texture

Photograph 1: Student Analysis 1

**Element**  
**VALUE AND LIGHT (A)**  
**RULE OF THIRDS (B)**  
 Why this element?  
 A. shadowed garbage with  
 light grasses and water  
 B. Dark muddy bottom  
 Middle grasses,  
 water top

**Element**  
**TEXTURE (C)**  
**SPACE (D)**  
 Why this element?  
 C. the colors and lines  
 create grass texture  
 D. trash in the foreground,  
 grass in the middle,  
 water in the background

**Element**  
**LINES/ SHAPE (E)**  
**TEXTURE (F)**  
 Why this element?  
 E. Lines of the grass  
 F. Shapes of the circle  
 Square corner of trash  
 rectangle of the rock

Photograph 2: Student Analysis 2

**Element**  
**COLOR (A)**  
**SHAPE (B)**  
 Why this element?  
 A. The contrast of grey/  
 brown with the light bottle  
 B. The one shape of the  
 bottle floating

**Element**  
**VALUE AND LIGHT (C)**  
**LINE (D)**  
 Why this element?  
 C. light garbage on dark  
 waters, pronounced ripples  
 D. Ripples create lines

**Element**  
**PERSPECTIVE (E)**  
**FORM (F)**  
 Why this element?  
 E. Angled down perspective  
 gives feel lonely feel  
 F. The lonesome water  
 bottle is detailed

Word Bank

Perspective

Line

Rule of Thirds

Leading Line

Shape

Form

Space

Foreground

Middle Ground

Background

Color

Value and Light

Texture

Photograph 3: Student Analysis 3

Element

**RULE OF THIRDS (A)**

**LINES (B)**

Why this element?

A. top is grass, middle is

bottle, bottom is grass

B. Vertical lines of grass

Horizontal Lines of grass

Element

**SHAPE (C)**

**TEXTURE (D)**

Why this element?

C. Rectangle of Bottle

circle of bottle lid, shell

D. Bottom grass

Element

**SPACE (E)**

**PERSPECTIVE (F)**

Why this element?

foreground= grass, middle

ground= dirt and garbage

background= blurred grass

F. close to blurry back

Photograph 4: Student Analysis 4

Element

**LINES (A)**

**SHADOW (B)**

Why this element?

A. Stick floating atop water

B. shadow underneath

water, grass above

Element

**COLOR (C)**

**RULE OF THIRDS (D)**

Why this element?

C. blips of color grass

contrast brown water right

D. 2/3 of photo is grass

1/3 of photo is brown water

Element

**SPACE (E)**

**PERSPECTIVE (F)**

Why this element?

E. Top of water versus

the water depth of the water

F. Aerial View rather than

sideline view

Photograph 5: Student Analysis 5

Element

**RULE OF THIRDS (A)**

**COLOR (B)**

Why this element?

A. bottom dirt with garbage

middle grass, top blue sky

B. Blue top, green middle,

brown bottoms, garbage

blue

Element

**VALUE AND LIGHT (C)**

**LINES (D)**

Why this element?

C. Light hitting grass makes

it colorful, shadows encase

ground and garbage

D. Lines of grass highlight

nature

Element

**SHAPE (E)**

**TEXTURE (F)**

Why this element?

E. Shape of garbage

F. Texture of grass and

leaves near the top of skyline